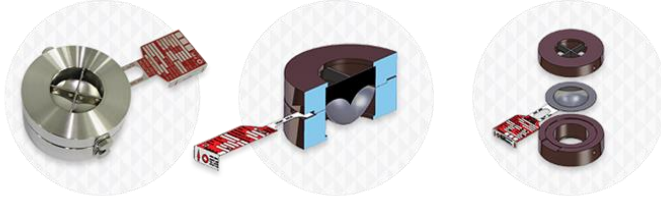


# KSRR



Design		Product Features	
Reverse Dome Knife Type		Highly safe and resistant to corrosion	
It is used with installation on FDC standard holder		Favourable for counterpressure, vacuum and pulsation conditions	
Reversal structure ruptured by knife blade attached upper holder while dome is inverted		Long life of disc as there is small gap between working pressure and rupture pressure	
		Vacuum Support is needless	
		Wide range of workable temperature	
Specification			
<b>Standard</b>	ASME Code Sec.VIII, KS B ISO 4126, API RP520, KOSHA Code, FDC Standard		
<b>Size</b>	1/2" ~ 48"		
<b>Set. Pressure</b>	0.3 ~ 150kg/cm <sup>2</sup>		
<b>Temperature</b>	Max. 593°C		
<b>Material</b>	C.S, SUS, Duplex, Nickel, Inconel, Monel, Hastelloy, Titanium, Tantalum, Special Alloy, Aluminum		
<b>Fragment</b>	No		
<b>Process Media</b>	Gas, Vapor		
<b>Max. Operating Ratio</b>	90%		
<b>Spark</b>	Yes		
<b>Option</b>	Pressure Gauge, Burst Sensor, Excess Flow Valve, Alarm System, Long & Short Nipple, Junction Box, Stud Bolt/Nut, PFA/PTFE Coating, Jack Screw, Ferrule Connection, Tee, J-Hook, Plug, Pressure Switch, Reducer, Rain-Hood		