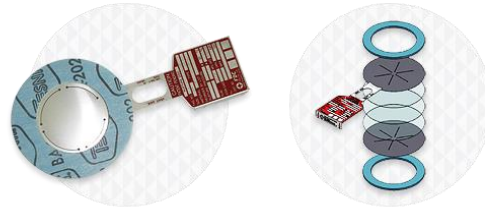
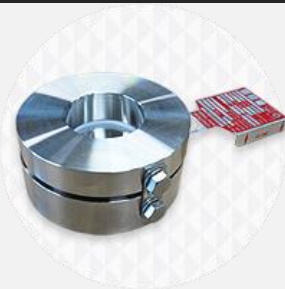


# KSRO



Design	Product Features
Composite Flat Type for Flange	Suitable for liquid or steam media environments
Used with installation on Flange without holder	Vulnerability to pulsation conditions
Composite/Flat structure ruptured by slit processed on Top disc	Vulnerability to high temperature in case that material of Seal disc is Tefl on
It consists of Top disc, Seal disc and Vacuum disc	If any, Vacuum Support is available
	It is applied to low pressure mainly
	Resistant to corrosion according to Seal Disc materials
	Precise rupture performance and excellent reliability
	Limited temperature range by Seal Disc material

## Connection



### KSROH

Composite Flat Type

Same as KSRO, but used with installation on FDC standard holder



### KSROF

Composite Flat Type for Ferrule

Same as KSRO, but used with installation on Ferrule Connection without holder

## Specification

Division	KSRO	KSROH	KSROF
<b>Design</b>	Composite Flat Type for Flange	Composite Flat Type	Composite Flat Type for Ferrule
<b>Description</b>	Used with installation on Flange without holder	Same as KSRO, but used with installation on FDC standard holder	Same as KSRO, but used with installation on Ferrule Connection without holder
<b>Standard</b>	ASME Code Sec.VIII, KS B ISO 4126, API RP520, KOSHA Code, FDC Standard		
<b>Size</b>	1/2" ~ 72"	1/2" ~ 48"	1S ~ 4S Ferrul
<b>Set. Pressure</b>	0.05 ~ 35kg/cm <sup>2</sup>	0.05 ~ 35kg/cm <sup>2</sup>	0.05 ~ 15kg/cm <sup>2</sup>
<b>Temperature</b>	Max. 482°C		
<b>Material</b>	C.S, SUS, Duplex, Nickel, Inconel, Monel, Hastelloy, Titanium, Tantalium, Special Alloy, Aluminum		
<b>Fragment</b>	No		
<b>Process Media</b>	Gas, Vapor, Liquid		
<b>Max. Operating Ratio</b>	50%		
<b>Spark</b>	No		
<b>Option</b>	Pressure Gauge, Burst Sensor, Excess Flow Valve, Alarm System, Long & Short Nipple, Junction Box, Stud Bolt/Nut, PFA/PTFE Coating, Jack Screw, Tee, J-Hook, Plug, Pressure Switch, Reducer		