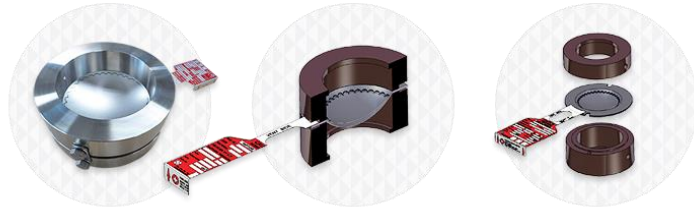



KSRBKH



Design		Product Features	
Reverse Dome Buckling Knife Type		Highly safe and resistant to corrosion	
It is used with installation on FDC standard holder		Favourable for counterpressure, vacuum and pulsation conditions	
It consists of Control Disc and Seal Disc		Long life of disc as there is small gap between working pressure and rupture pressure	
Ruptured while dome is sheared by Knife of Control Disc		Vacuum Support is needless	
		Wide range of workable temperature	
		Easy to handle with strong impact resistance	
		Precise rupture performance and excellent reliability	
		Patent protected	
Connection			
		KSRBK Reverse Dome Buckling Knife Type for Flange Same as KSRBKH, but used with installation on Flange without holder	
Specification			
Division	KSRBKH	KSRBK	
Design	Reverse Dome Buckling Knife Type	Reverse Dome Buckling Knife Type for Flange	
Description	It is used with installation on FDC standard holder	Same as KSRBKH, but used with installation on Ferrule Connection without holder	
Standard	ASME Code Sec.VIII, KS B ISO 4126, API RP520, KOSHA Code, FDC Standard		
Size	1/2" ~ 36"		

Set. Pressure	0.1 ~ 50kg/cm ²
Temperature	Max.593°C
Material	C.S, SUS, Duplex, Nickel, Inconel, Monel, Hastelloy, Titanium, Tantalium, Special Alloy, Aluminum
Fragment	No
Process Media	Gas, Vapor, Liquid
Max. Operating Ratio	90%
Spark	No
Option	Pressure Gauge, Burst Sensor, Excess Flow Valve, Alarm System, Long & Short Nipple, Junction Box, Stud Bolt/Nut, PFA/PTFE Coating, Jack Screw, Tee, J-Hook, Plug, Pressure Switch, Reducer